

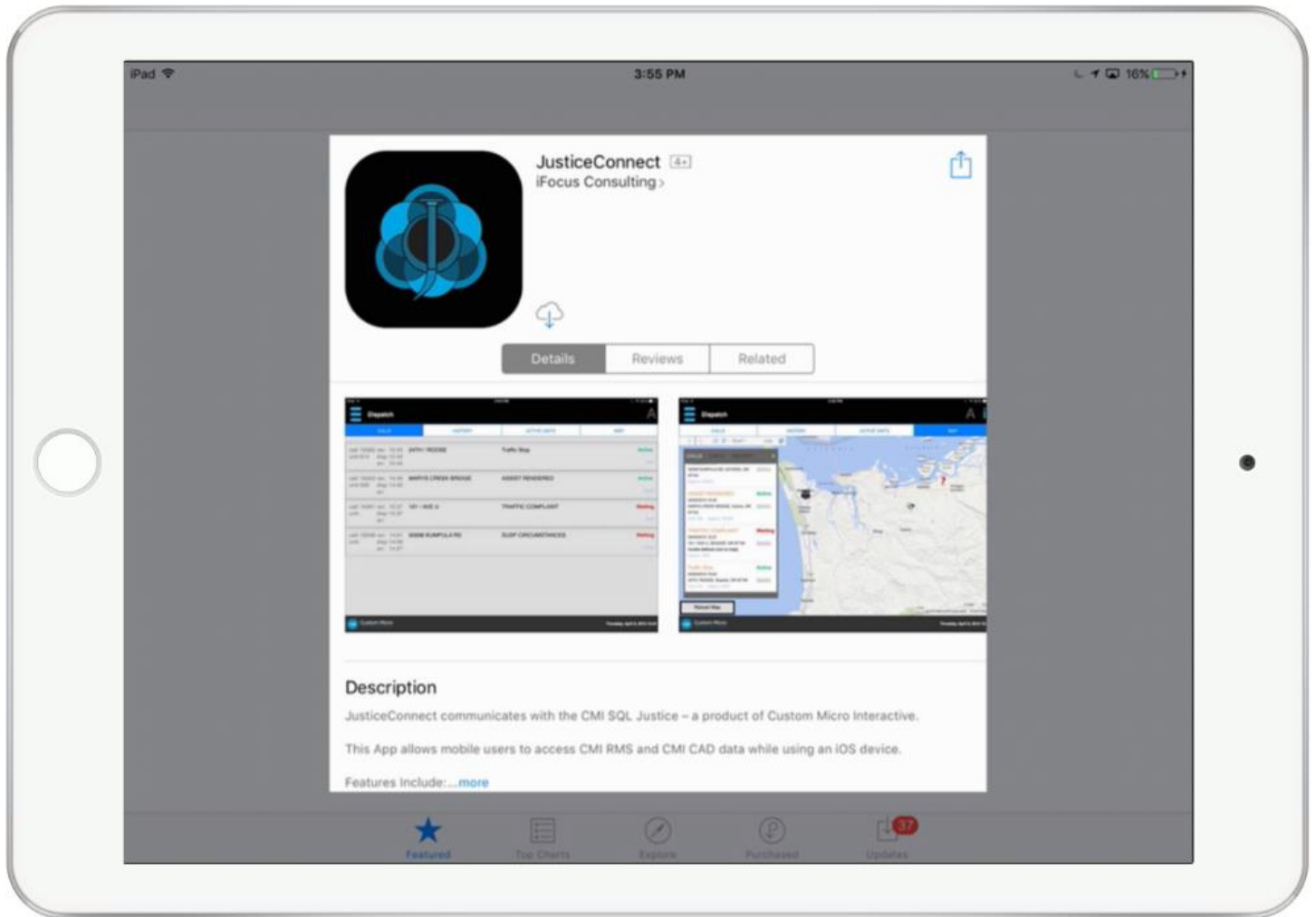
The logo for CMi, consisting of the letters 'CMi' in white on a blue square background.

**CMi**

JUSTICECONNECT

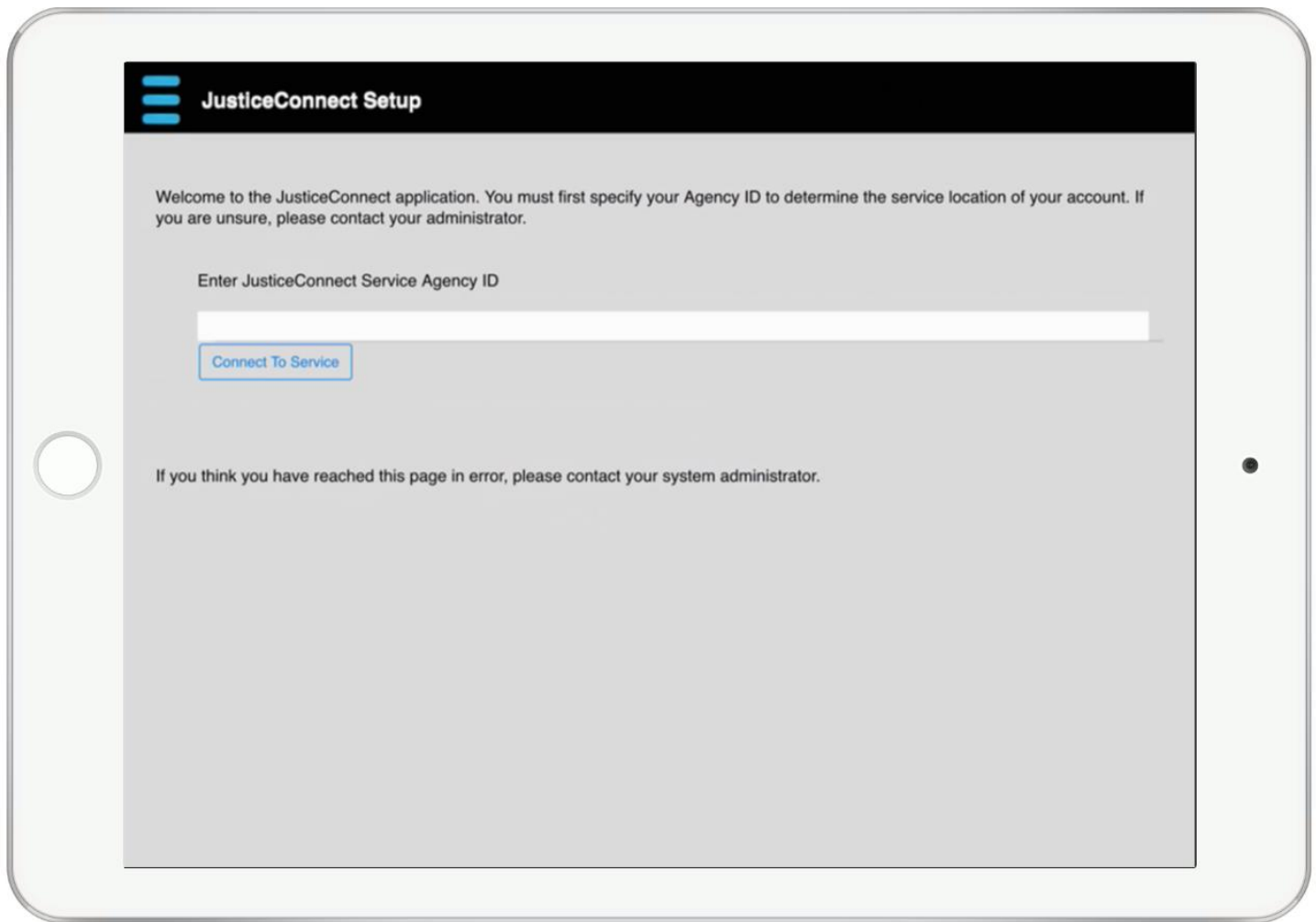
## **Setup JusticeConnect on iOS Device**

# Step 1: Install JusticeConnect App



Search on the App Store for JusticeConnect or follow this link: <http://custommicro.com/ios>

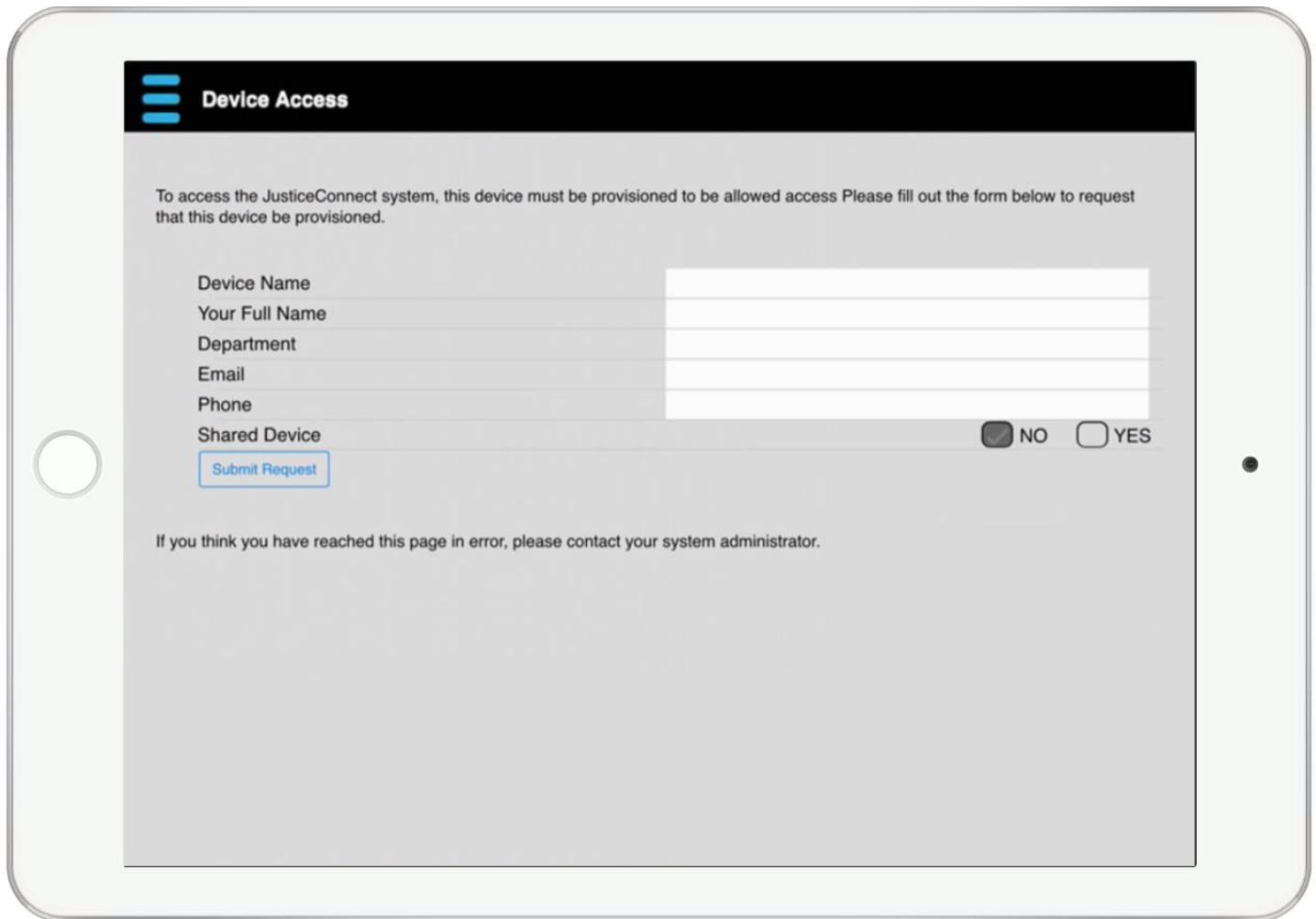
## Step 2: Connect to Agency



After installing JusticeConnect an opening setup screen will ask for an **AGENCY ID**. Please enter your ID and click **Connect to Service**.

*Contact support or ask your Agency Administrator if you don't know your assigned ID.*

## Step 3: Send Provisioning Request

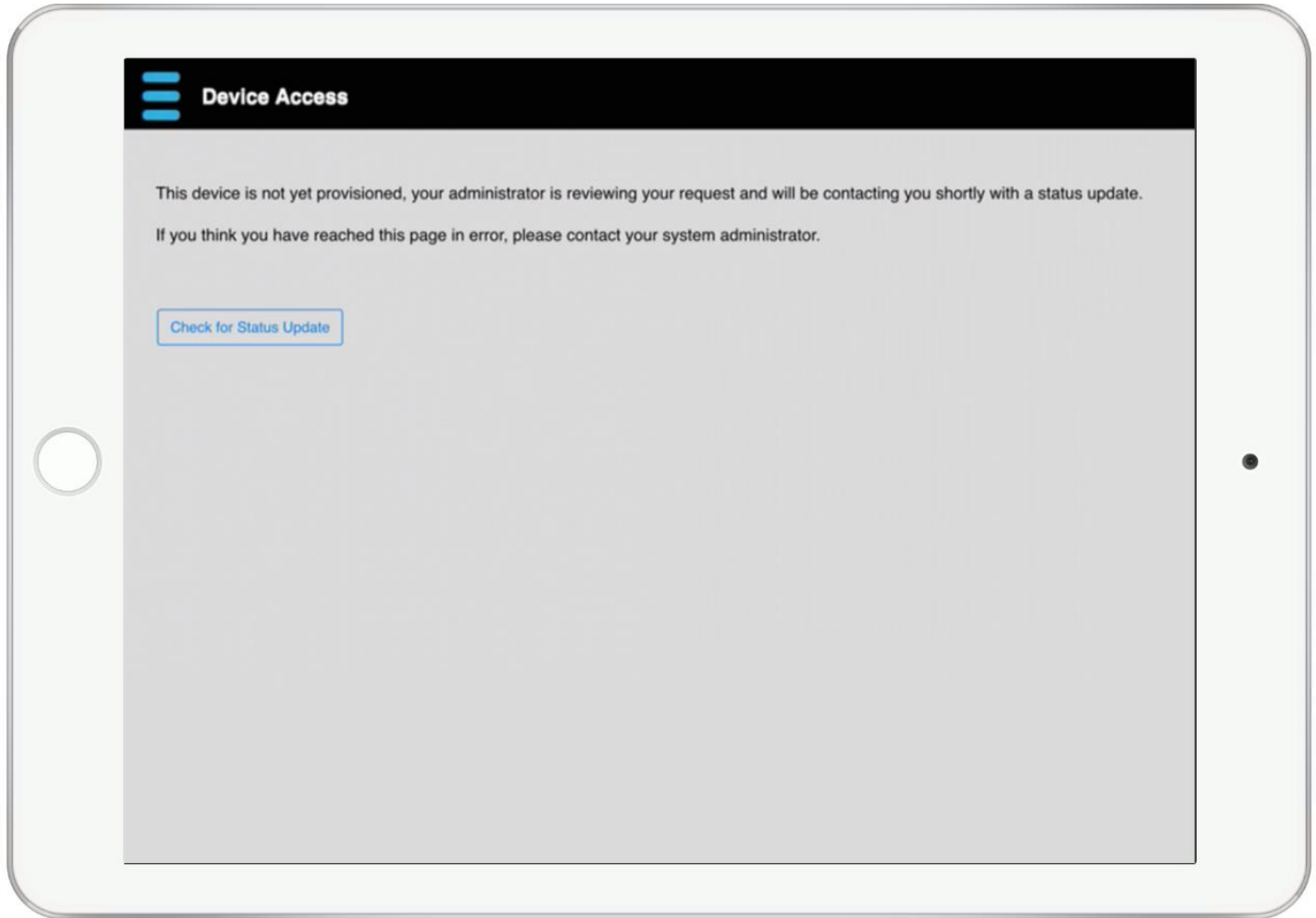


The screenshot shows a mobile application interface titled "Device Access". At the top, there is a black header with a blue hamburger menu icon and the text "Device Access". Below the header, a grey box contains the following text: "To access the JusticeConnect system, this device must be provisioned to be allowed access Please fill out the form below to request that this device be provisioned." The form consists of several input fields: "Device Name", "Your Full Name", "Department", "Email", and "Phone". These fields are grouped together on the right side of the form. Below these fields is a "Shared Device" checkbox, which is currently checked (NO) and has an unchecked (YES) option. A blue "Submit Request" button is located at the bottom left of the form. At the bottom of the grey box, there is a small text line: "If you think you have reached this page in error, please contact your system administrator."

Each device connecting to the **JusticeConnect** Server must be provisioned and approved before access is granted.

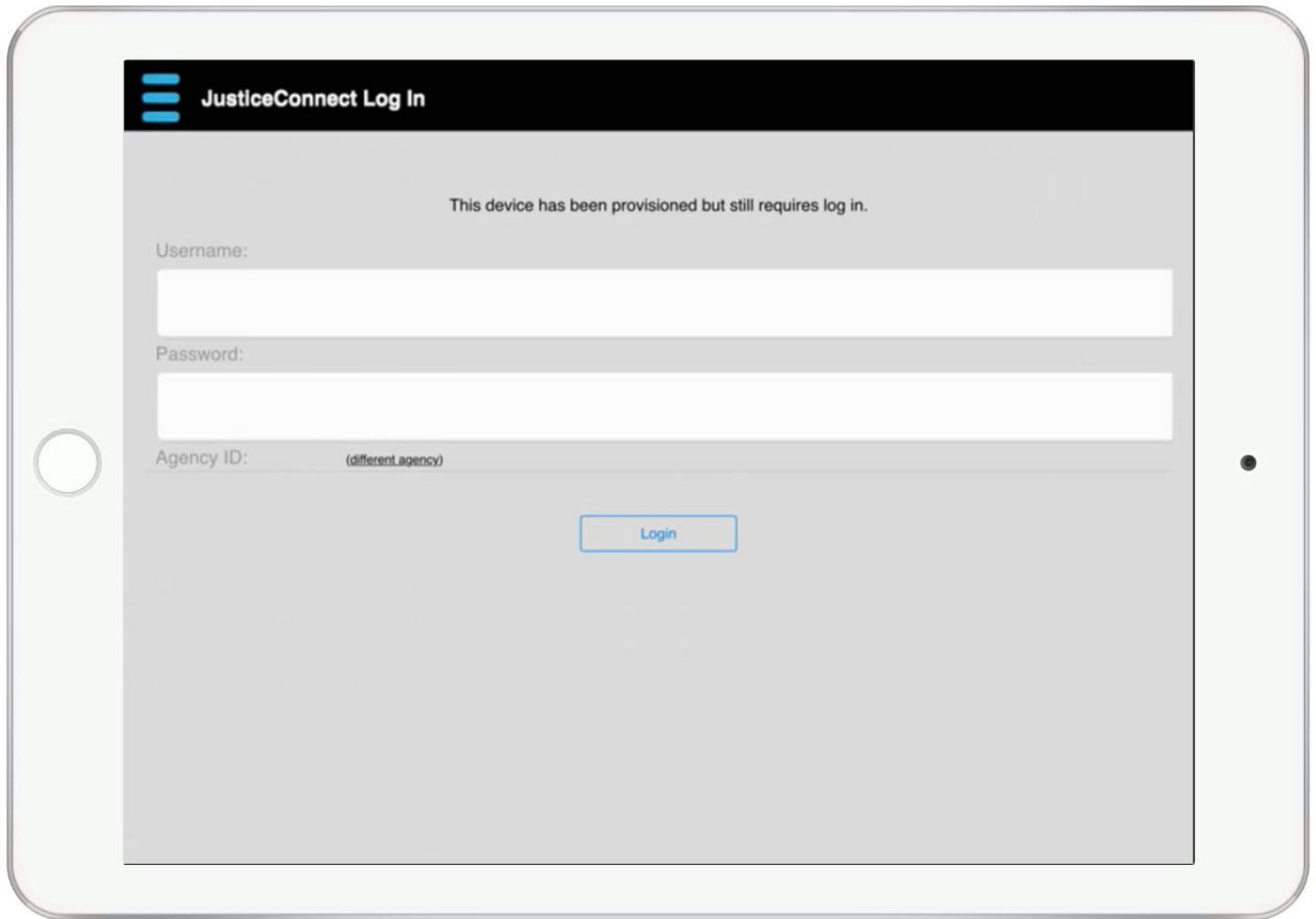
On the **Device Access** screen, fill all fields and click **Submit Request**.

## Step 4: Wait for Administration Approval



A screen will appear showing that your request has been sent and an Administrator will review and approve. You can close the app and return to it once you have received an automatic confirmation email from the **JusticeConnect** Server that your device request has been approved.

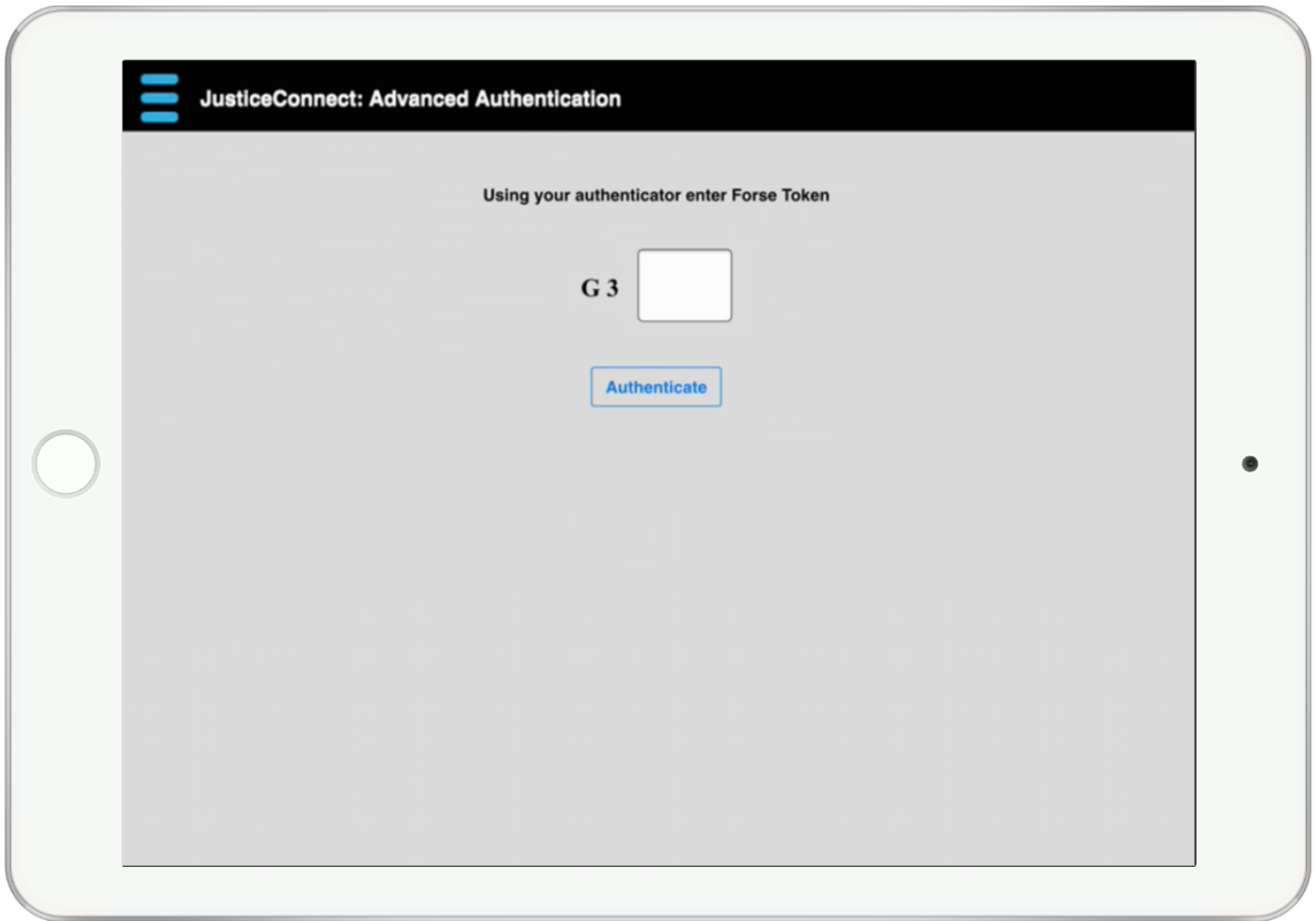
## Step 5: Login to JusticeConnect App



After the provisioning request for the device has been approved, a **JusticeConenct Log In** screen will appear.

Enter your existing **CMI** credentials into the Username and Password fields and continue with Login.

## Step 6: Provide Advanced Authentication Token



After CMI credentials have been successfully authenticated, a screen will prompt for **Advanced Authentication**.

Using your **Forse Token Card**, enter the response to match the grid request.

---

Contact your Agency Administrator to print your **Forse Token Card** from the JusticeConnect Admin Portal.

**Forse Token - 12/03/2014**

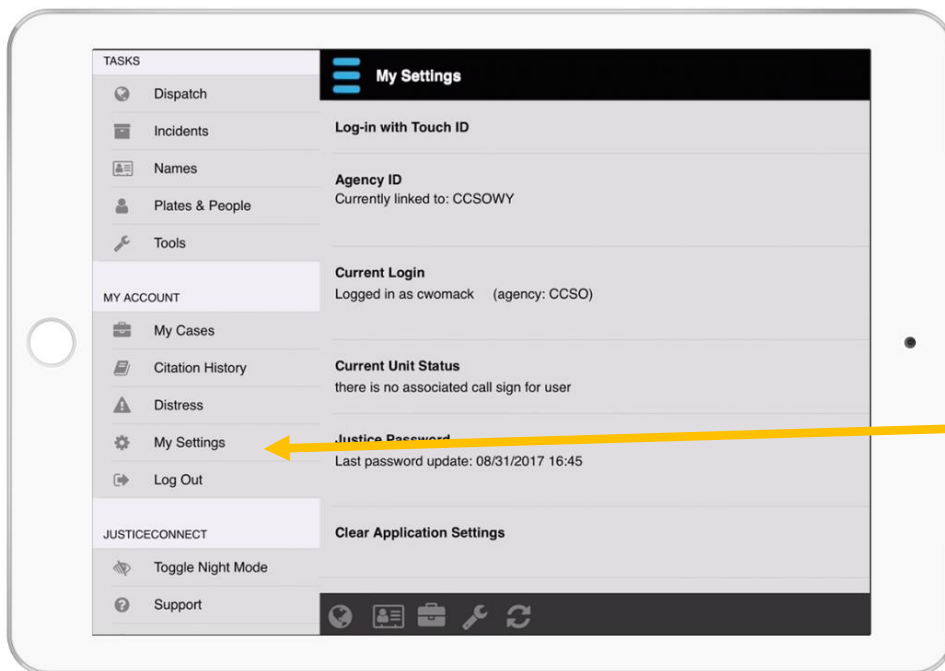
--	1	2	3	4	5
A	Jh	G2	uC	NG	5k
B	Bf	4L	ip	cP	U4
C	2E	UA	v6	zw	C6
D	Fo	f5	UP	08	Da
E	mD	wu	C1	TE	LG
F	Li	WC	Ff	eo	B2
G	hg	XU	vT	SD	Xm
H	Ao	V*	is	kt	4E
I	qq	xc	4r	sS	x3
J	nG	WV	!X	bX	qR

## Step 7: Activate Touch ID (optional)

Leveraging the built in finger print readers on newer iOS Devices, the biometric authenticator can be activated to allow access to JusticeConnect. Per CJIS Policy, a biometric authenticator is an allowed mechanism to confirm secure access.

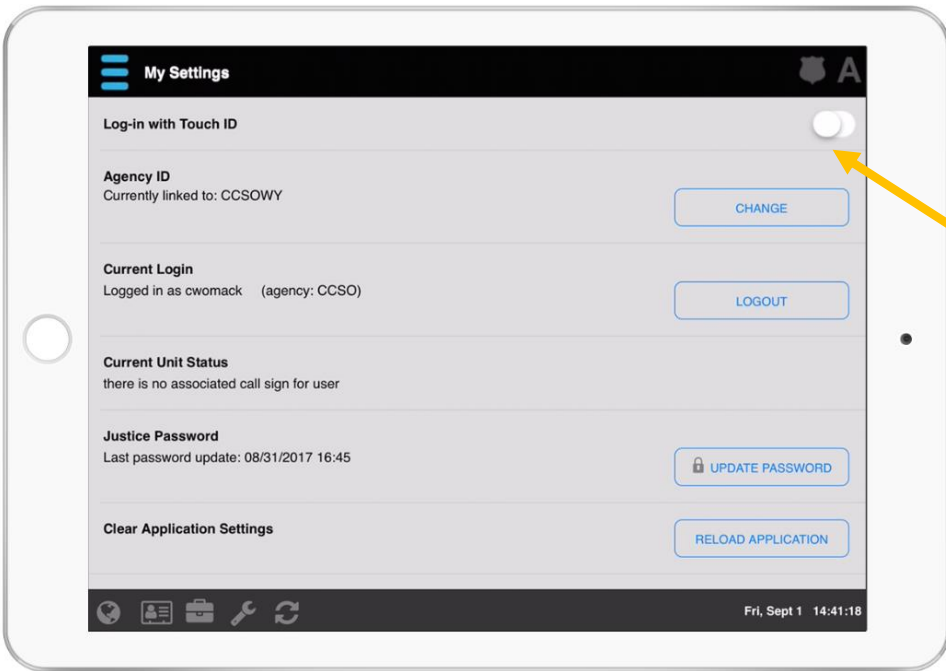
Touch ID can be activated after a user has successfully provisioned the iOS Device, signed-in with an authorized CMI Username/Password and verified identity with the user assigned unique Forse Token.

Activate Touch ID from the **My Settings** menu.

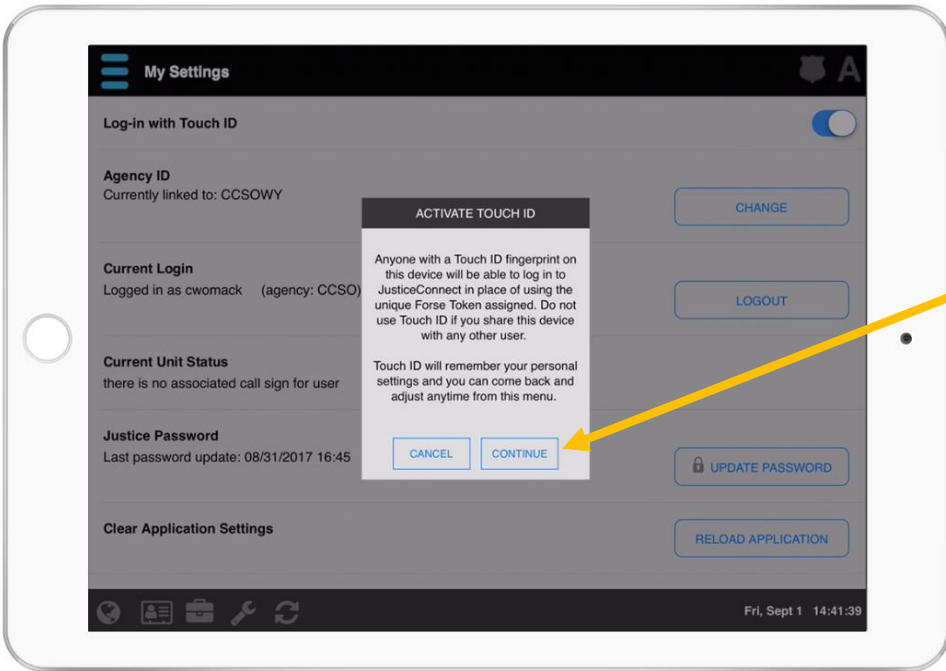


Select **My Settings** from the left hand navigation menu.

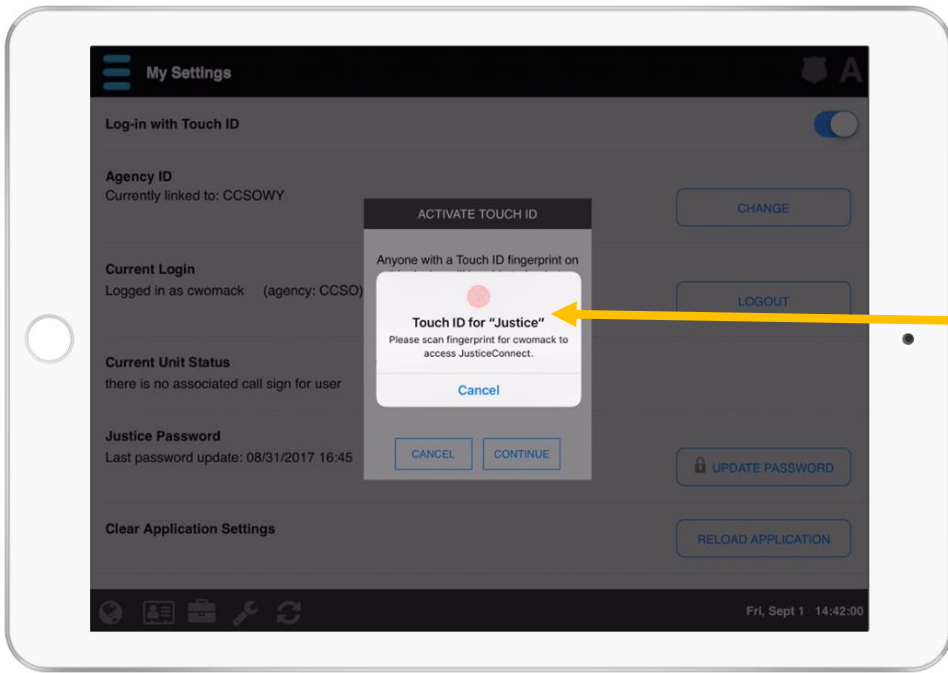




Toggle on the option for Log-in with Touch ID



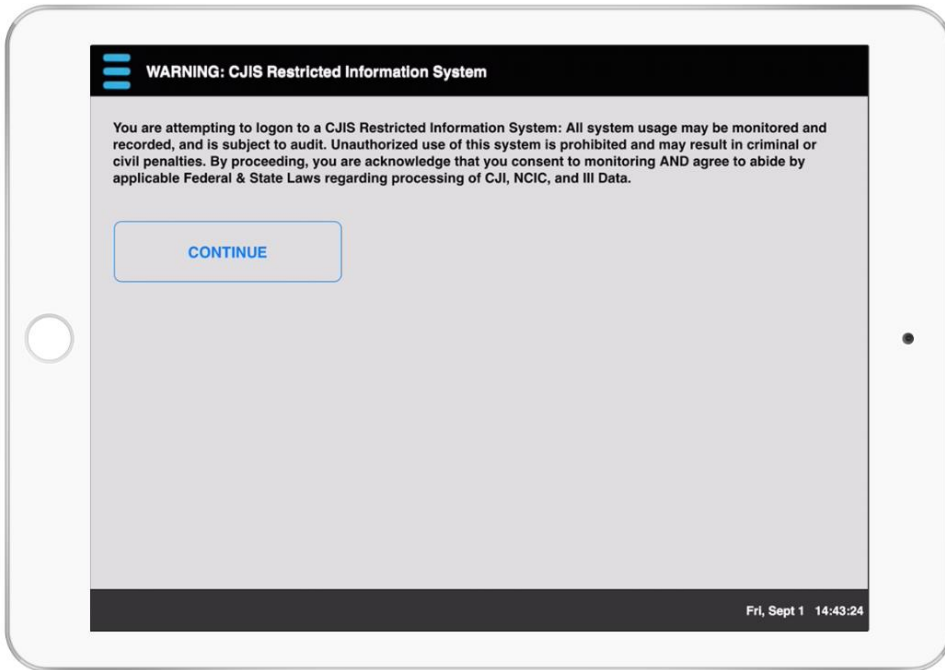
Confirm the Activation of Touch ID.



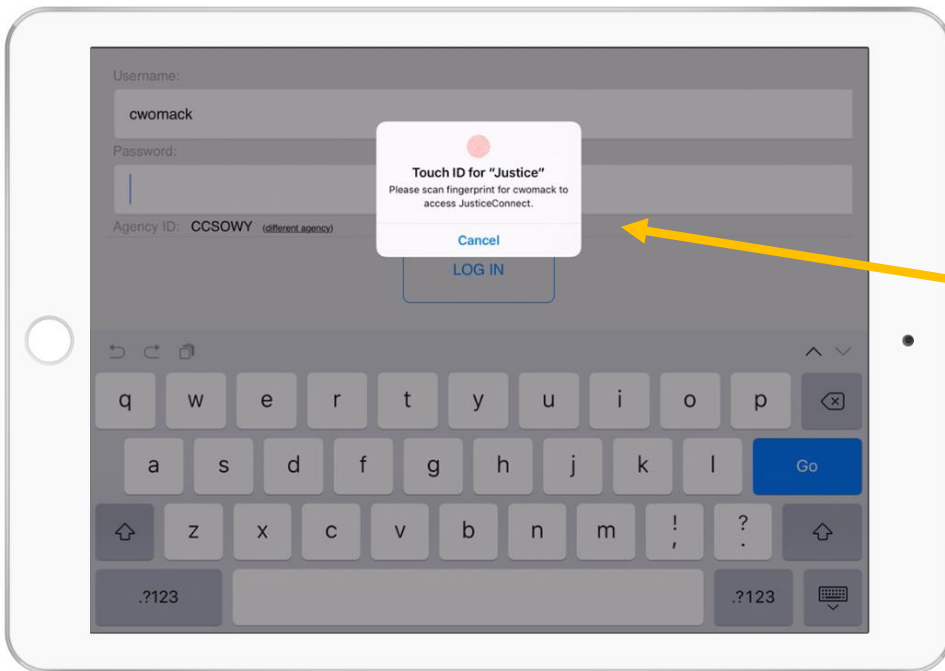
Use your fingerprint to authorize the activation of Touch ID within the App.

# Use of Touch ID

Open the App normally and click **Continue** on the CJIS Restricted Information System screen.



When Touch ID is enabled for the App, a prompt will request your fingerprint for access.



Use your fingerprint to authorize the activation of Touch ID within the App.

**Note:** If you click *Cancel* or your fingerprint is not correctly read, you will be prompted to enter your Forsee Token for Access to JusticeConnect.

# JusticeConnect Support

Product Details: <https://justiceconnect.us>  
Email Support: [support@justiceconnect.us](mailto:support@justiceconnect.us)  
Phone Support: 503-223-3089 option #2  
Online Guides: <http://support.cmisoftware.com/justiceconnect> (passcode = cmisoftware )



*Revision Date: 12/27/2018*